

Virginia's National Core Indicators (NCI) Project

Comparison of Virginia Data with National Data 2014 and 2015

Adult Consumer Survey Results

Prepared by:

Partnership for People with Disabilities
Virginia Commonwealth University

November 2015



The Partnership for People with Disabilities is a university center for excellence in developmental disabilities at Virginia Commonwealth University. VCU is an equal opportunity/affirmative action university providing access to education and employment without regard to age, race, color, national origin, gender, religion, sexual orientation, veteran's status, political affiliation, or disability. If alternative formats of this document are needed, please contact the Partnership at (804) 828-3876 or (800) 828-1120 (TTY Relay).



NATIONAL CORE INDICATORS

IN VIRGINIA

This report includes a comparison of information from Virginia data collected in Fiscal Year 2014 (July 1, 2013 - June 30, 2014), Fiscal Year 2015 (July 1 2014 - June 30, 2015), and national data collected in Fiscal Year 2014 (July 1, 2013 - June 30, 2014).

Information in this report is from a sample of adults with intellectual and developmental disabilities (I/DD) who use services from the Intellectual Disability (ID), Individual and Family Developmental Disabilities Support (DD), and Day Support (DS) Waivers; adults who live in state training centers, community ICFs-IID, and nursing facilities; and adults who have recently moved out of state training centers.

The information is from the Adult Consumer Survey. The survey has three sections:

- BACKGROUND: completed by support coordinators, case managers, or social workers
- SECTION 1: only the person who uses services can respond
- SECTION 2: the person or a proxy can respond

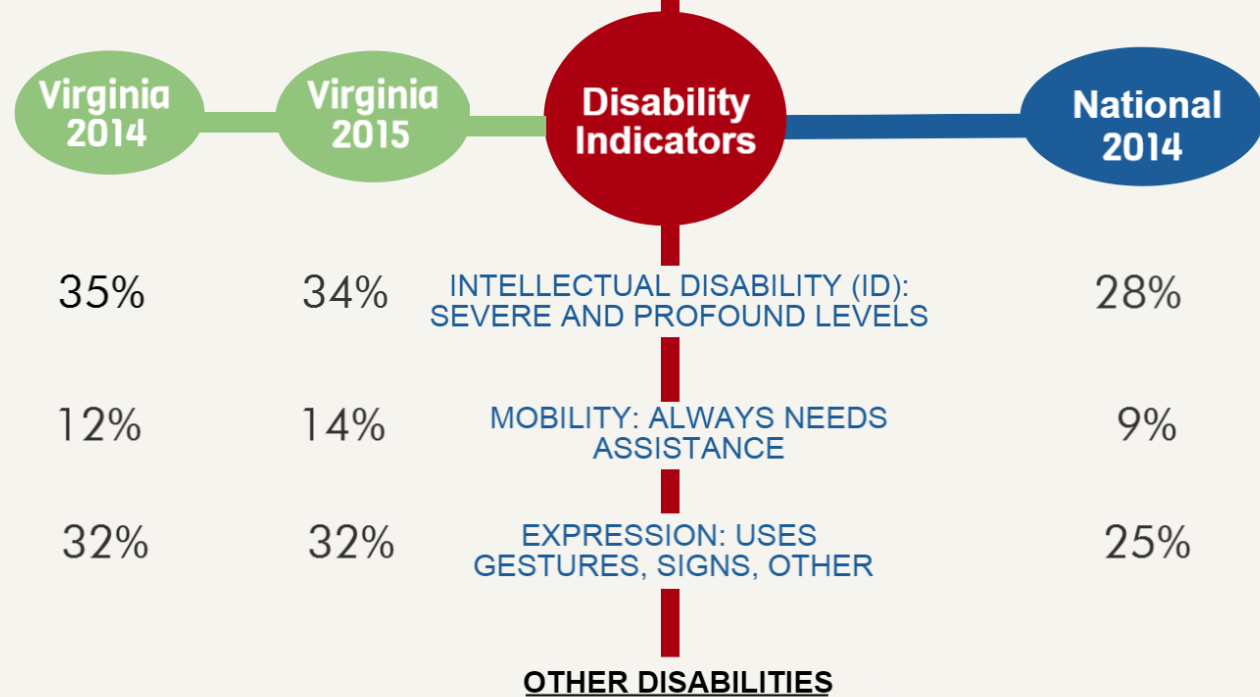
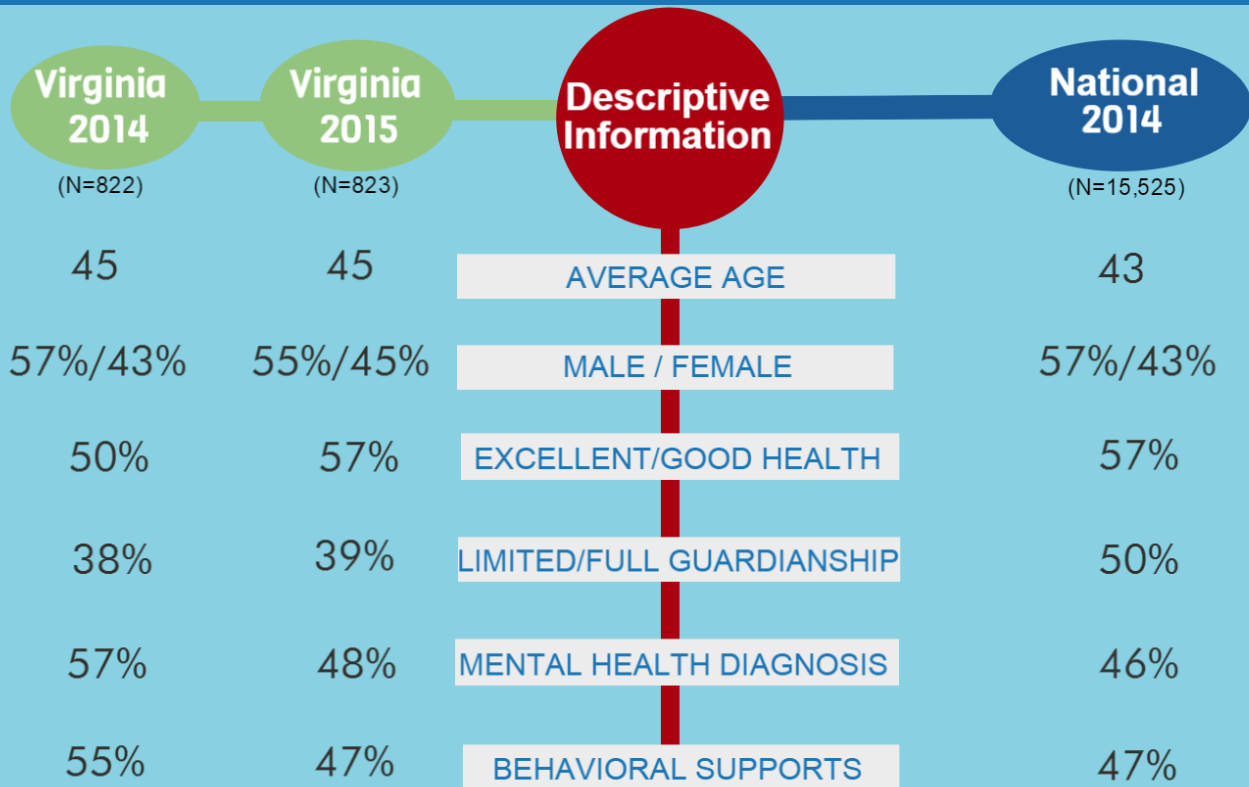
Virginia participates in the National Core Indicators (NCI) project as part of the state's effort to measure the quality of I/DD services and systems performance.

Questions about this report should be referred to Parthy Dinora at padinora@vcu.edu

**For more information about
NCI in Virginia,
visit our website at:
www.vcu.edu/partnership/nci**

Virginia's National Core Indicators Project Comparison with National Data

ADULT CONSUMER SURVEY RESULTS



Seizures are the most commonly reported "other disability" in Virginia (36% in 2014, 34% in 2015) and nationwide (32% in 2014).

Autism and cerebral palsy are reported at approximately the same rate in Virginia and nationwide.

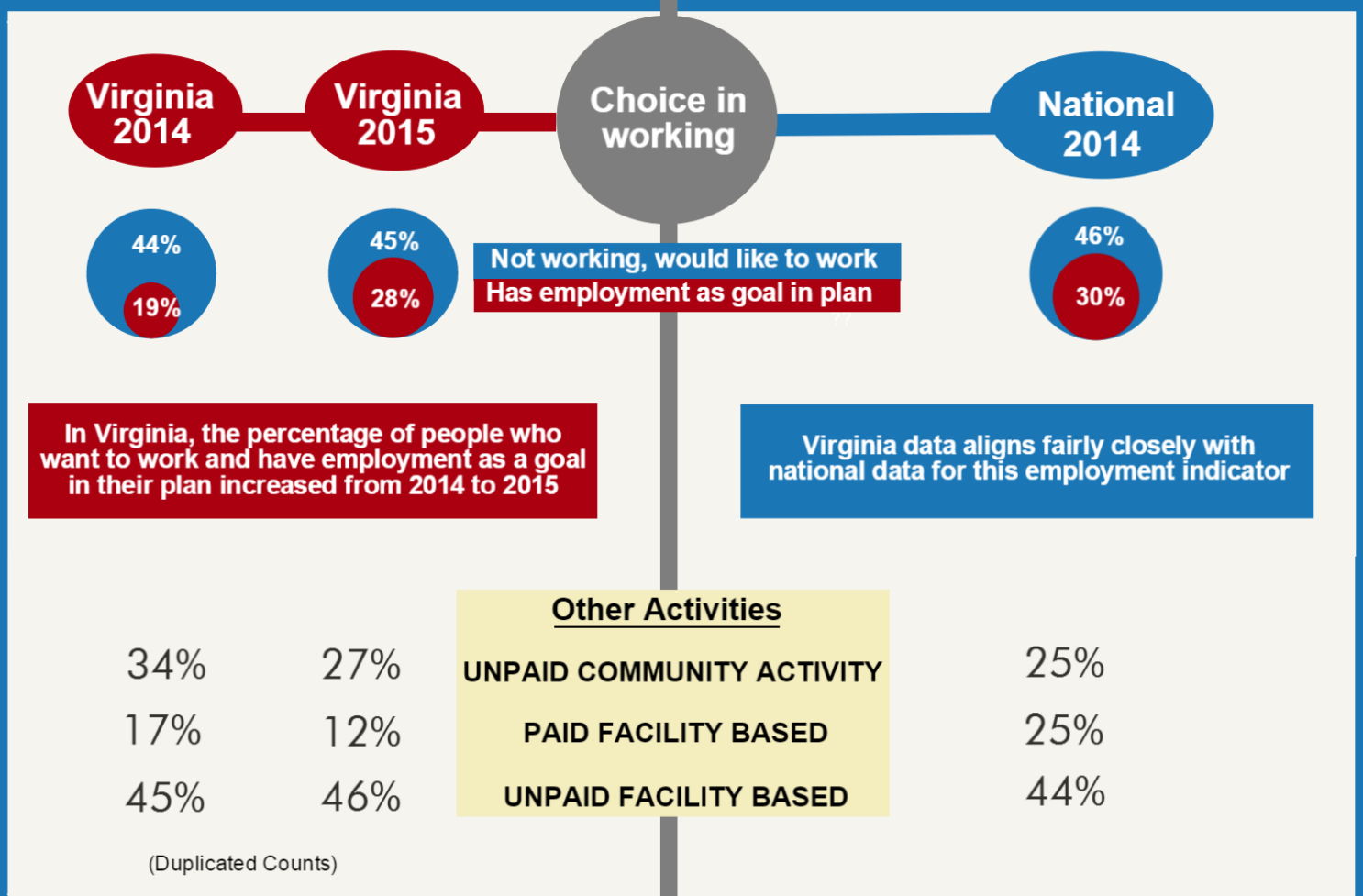
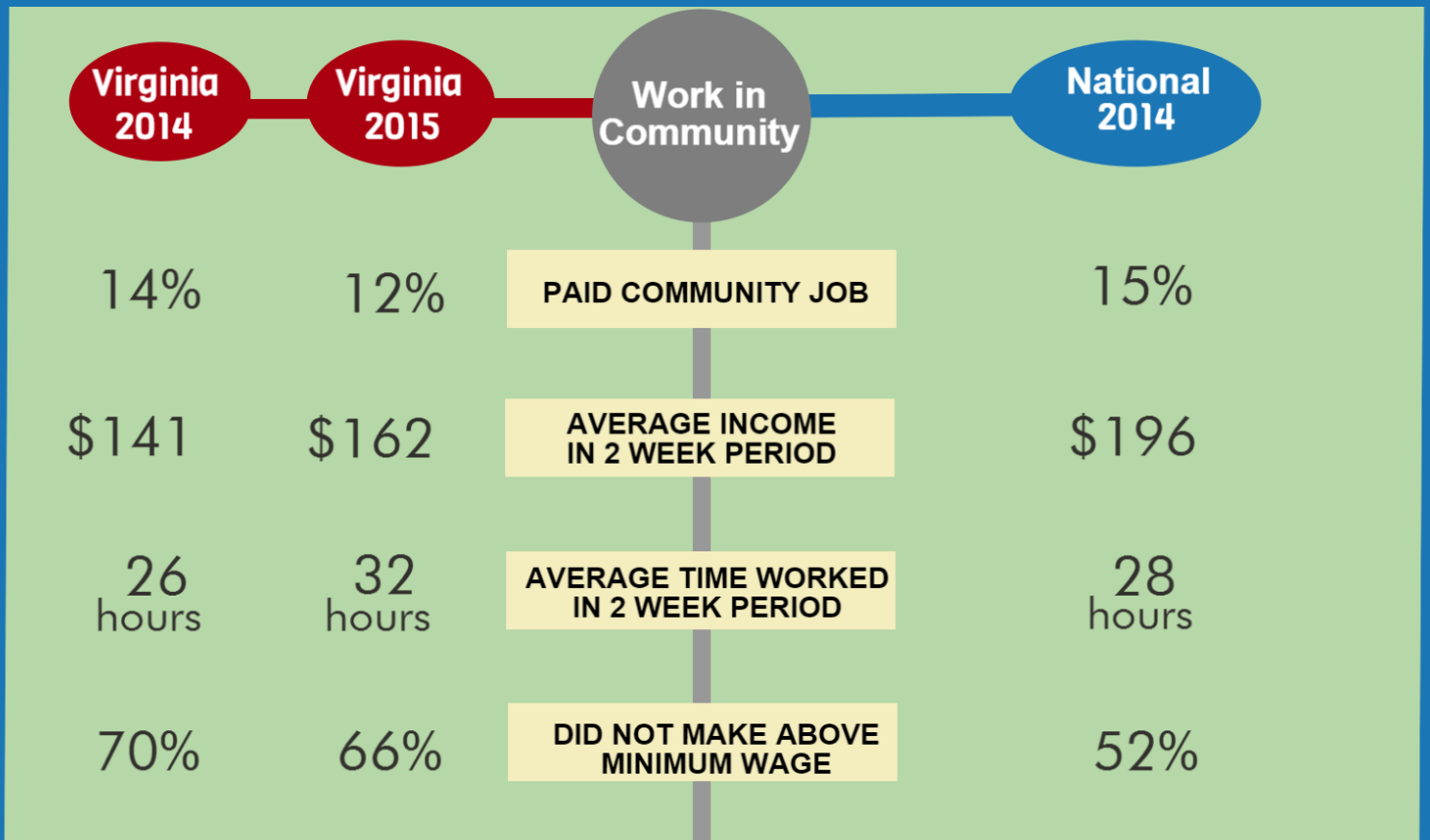
Autism: 19%
Cerebral Palsy: 19%

Autism: 21%
Cerebral Palsy: 16%

Autism: 17%
Cerebral Palsy: 17%

Virginia's National Core Indicators Project Comparison with National Data

ADULT CONSUMER SURVEY RESULTS



Virginia's National Core Indicators Project Comparison with National Data

ADULT CONSUMER SURVEY RESULTS

Virginia
2014

Virginia
2015

Where
People Live

National
2014

| Virginia 2014 | Virginia 2015 | Where People Live | National 2014 |
|---------------|---------------|---------------------------|---------------|
| 5% | 5% | Own home/apartment | 19% |
| 6% | 5% | Group home 1-3 person | 11% |
| 26% | 32% | Group home 4-6 person | 15% |
| 8% | 7% | Group home 7-15 person | 4% |
| 10% | 8% | Host/sponsored home | 8% |
| 28% | 27% | Family or Relative's home | 35% |
| 10% | 9% | Specialized facility | 4% |
| 6% | 7% | Nursing facility | 1% |
| 2% | less than 1% | Other | 3% |

AMOUNT OF STAFF SUPERVISION

| Virginia 2014 | Virginia 2015 | Amount of Staff Supervision | National 2014 |
|---------------|---------------|-----------------------------------|---------------|
| 66% | 65% | 24 hour | 56% |
| 21% | 22% | Staff supervision - daily on-site | 15% |
| 5% | 6% | less than daily | 17% |

Virginia
2014

Virginia
2015

Choice and
Satisfaction

National
2014

CHOICE IN HOME SELECTION

| Virginia 2014 | Virginia 2015 | Choice in Home Selection | National 2014 |
|---------------|---------------|--------------------------|---------------|
| 18% | 15% | Chose home | 24% |
| 27% | 31% | Had some input | 27% |
| 55% | 53% | Someone else chose | 49% |

People who chose their own home like where they live more than people for whom someone else chose their home

SATISFACTION WITH LIVING ARRANGEMENTS

In Virginia and nationwide:



- 9 out of 10 people like where they live.
- over 90% of people say they have enough privacy.
- people who live in homes of 3 or less like where they live more than those who live in homes of 4 or more.
- a larger percentage of people living in a parent/relative home said they like where they live compared with those who live elsewhere.
- approximately 1 in every 3 people maybe or definitely would like to live somewhere else.

Virginia's National Core Indicators Project Comparison with National Data

ADULT CONSUMER SURVEY RESULTS

